



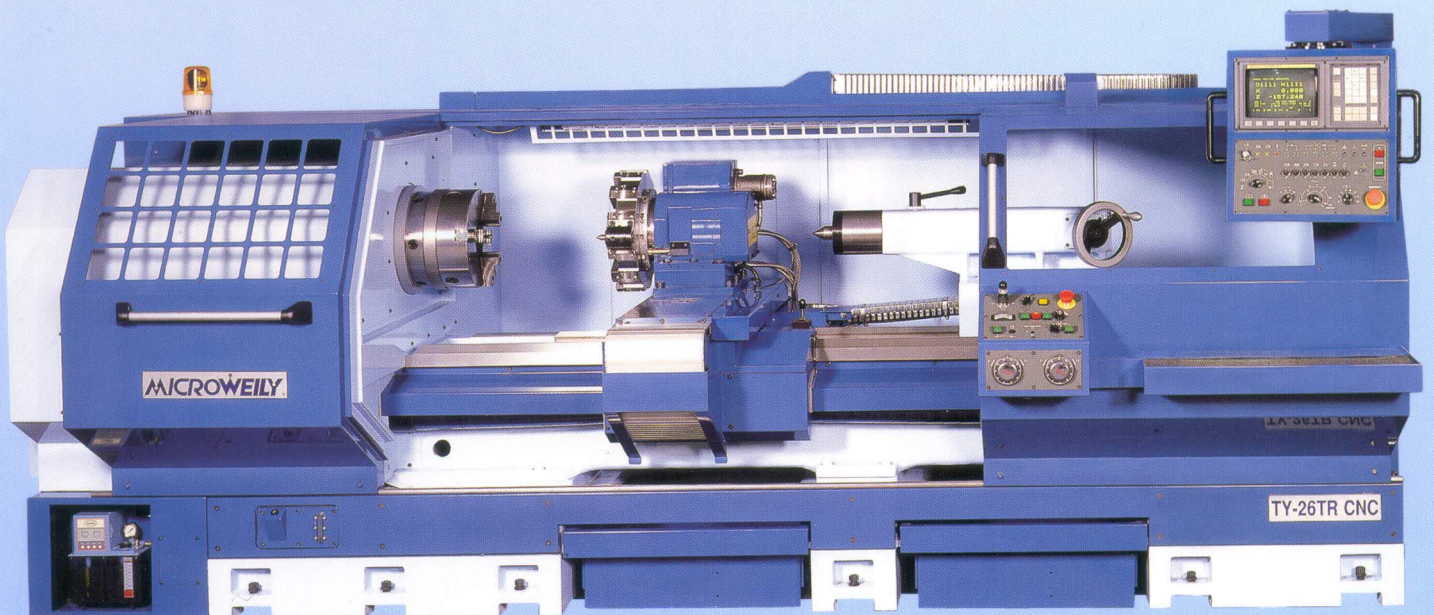
WE ARE AIMING EVEN BETTER.

**MICROWEILY**

**HIGH PERFORMANCE CNC LATHE**

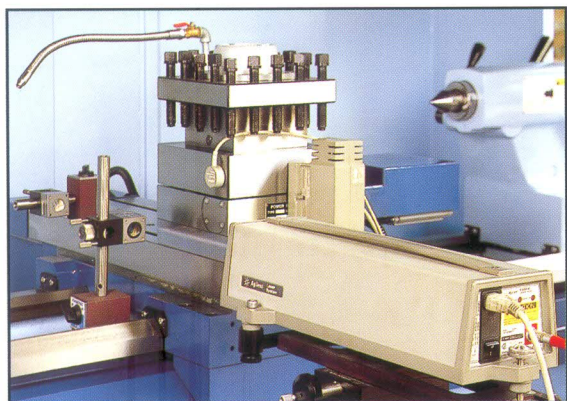
## **TY-22/26/30CNC SERIES**

MANUFACTURER & EXPORTER OF  
PRECISION LATHES

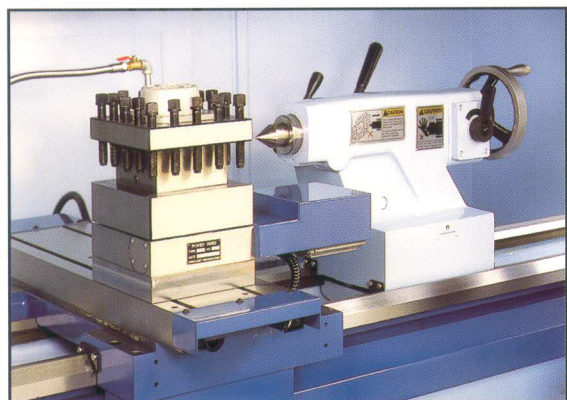


WE ARE AIMING EVEN BETTER.

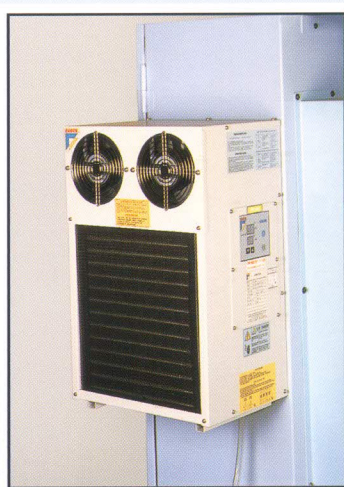
# MICROWEILY



- The CNC lathe is inspected by using advanced laser equipment, the equipment allows linear accuracy inspection and pitch error, etc... ensuring machining accuracy and repeatability. Linear accuracy of the machine is maintained using the CNC's leadscrew compensation function. 每台CNC均以雷射檢查直線及背隙等精度，保證機器的準確性和反覆性，再使用CNC做精準的補正。

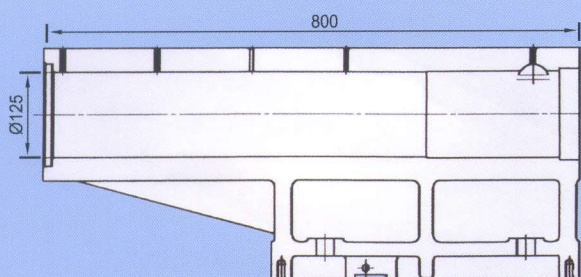


- Automatic 4-way indexing tool post. 電動四方刀架

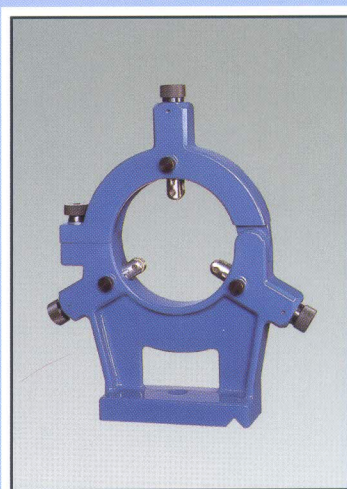


- Air conditioner to cool temperature of inside of electrical enclosure. 冷卻空調機—控制電器箱內的溫度(選配)

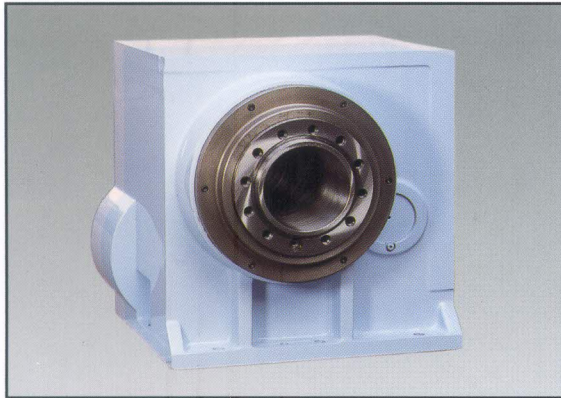
## TY-26/30CNC Tailstock (Heavy Type) / Optional 重型尾座(選配)



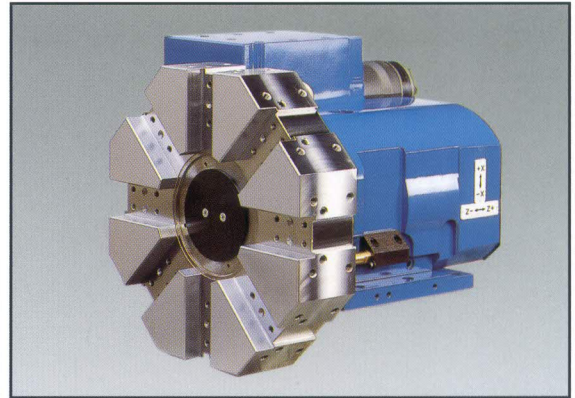
Unit(單位)=mm



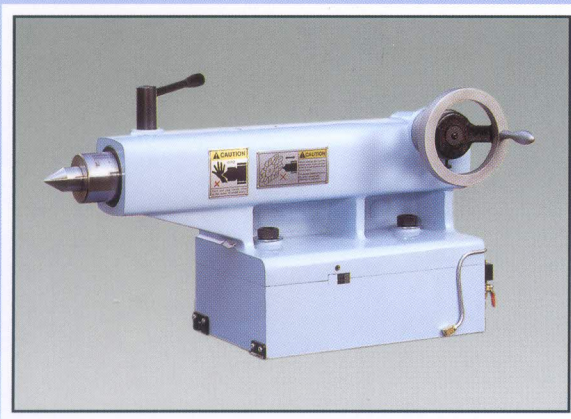
- Steady rest (roller bearing shaft, 3"-8") 中心架為滾柱軸承，容量為3"-8"(選配)



- Headstock is designed with large spindle bore  $\text{Ø}170\text{mm}$  (Standard) for TY-30CNC spindle bore  $\text{Ø}255\text{mm}$  (Optional) for TY-30CNC 主軸孔徑 $170\text{mm}$  (標準) /  $255\text{mm}$  (選配) 配合TY-30CNC



- Hydraulic of drum turret:  
8 position (Standard)  
10 or 12 position for 26", 30" series (Optional)  
turret tool size:  $25\text{mm}$   
turret tool time:  $0.3$  second  
油壓刀塔：8支刀 (標準)  
10支刀或12支刀為26" / 30"系列 (選配)  
刀塔刀具尺寸： $25\text{mm}$   
刀塔換刀時間：0.3秒



- Using airforce to reduce friction of resistance between tailstock and bed, tailstock is easy to slide on the bed.  
使用氣壓原理移動尾座，減少與床身的摩擦容易滑動。



- Chip conveyor (Optional) 鐵屑輸送機(選配)

# TY-22/26/30 CNC HIGH PRECISION LATHE

## SPECIFICATION :

SERIES	22TR/22NN	26TR/26NN	30TR
MODEL 機型	2260/2280/22120/22160	2660/2680/26120/26160	3060/3080/30120/30160
Swing over bed 過床身旋徑	560 mm (22")	660 mm (26")	760 mm (30")
Swing over cross slide 過橫向滑板旋徑	280 mm (11")	380 mm (15")	480 mm (19")
Center height 中心高度	280 mm (11")	330 mm (13")	380 mm (15")
Center admits between 兩心間最大距離	1500 mm (59") / 2000 mm (78-3/4") / 3000 mm (118") / 4000 mm (157-1/2")		
Bed width 床身寬度	460 mm (18")		
Bed length 床身長度	3000 mm (118") / 3500 mm (137-3/4") / 4500 mm (177") / 5500 mm (216-1/2")		
Bed height 床身高度	400 mm (15-3/4")		
Motor for main spindle 主軸馬達	15 HP For spindle bore 86 mm (20HP, Optional) 20 HP For spindle bore 105 mm, 130 mm 25 HP For spindle bore 170 mm / 250 mm (30TR series)		
Motor for coolant pump 冷卻幫浦	1/4 HP (3/4HP, Optional)		
Spindle nose No./bearing type 主軸鼻端尺寸/軸承	D1-8 or D1-11 / Taper roller bearing (TR) A2-8 or A2-11 / Cylindrical roller bearing (NN)		A2-11 / Taper roller bearing A2-15 / Taper roller bearing
Spindle bore 主軸孔徑	86 mm (3-3/8") for D1-8 or A2-8, 105 mm (4-1/4") for D1-11 or A2-11, 130 mm (5") for D1-11		170 mm (6-5/8") 255 mm (10") Optional
Spindle speed 主軸轉速	15-1500 r.p.m.(D1-8), 12-1200 r.p.m.(D1-11) 20-2000 r.p.m.(A2-8), 16-1600 r.p.m.(A2-11)		10-1000 r.p.m. (A2-11) 6-600 r.p.m. (A2-15)
Spindle taper in nose/sleeve 主軸鼻端孔及套筒推拔	MT No.8 / MT No.5		
Longitudinal travel (Z-axis) Z軸行程	1500 mm (59") / 2000 mm (78-3/4") / 3000 mm (118") / 4000 mm (157-1/2")		
Cross slide travel (X-axis) X軸行程	500 mm (19-5/8")		
Cross slide dimension 橫向滑板尺寸	1000 mm (39-3/8") x 258 mm (10-1/8")		
Ballscrew diameter X-axis X軸螺桿直徑	32 mm (1-1/4")		
Ballscrew diameter Z-axis Z軸螺桿直徑	50 mm (2")		
Servo motor for X axis X軸馬達	AC 1.5KW		
Servo motor for Z-axis Z軸馬達	AC 2.0KW		
Rapid traverse X,Z-axis X,Z軸快速進給	10m / min.		
Tailstock quill diameter 尾座套筒直徑	90 mm (3-1/2")		
Tailstock quill travel 尾座套筒行程	200 mm (7-7/8")		
Tailstock quill taper 尾座套筒內孔錐度	MT No.5		
Machine length 機器長度	4200 mm(165-3/8") / 4700 mm (185") / 5700 mm (224-1/2") / 6700 mm (263-3/4")		
Machine width 機器寬度	2000 mm (78/3/4")		
Machine height 機器高度	1700 mm (67") For 22" / 26" / 1800 mm (71") For 30"		
Packing dimension 包裝尺寸	200" x 90" x 79" / 229" x 90" x 79" / 262" x 90" x 79" / 262" x 90" x 79"		
Net weight 機器淨重	4200 Kgs / 4600 Kgs / 6500 Kgs / 8600 Kgs		
Gross weight 機器毛重	5000 Kgs / 5500 Kgs / 7500 Kgs / 9500 Kgs		



**WEY YII CORP.**

409-6 PEI-TON ROAD, PEI-TON DIST., 406  
P.O. BOX 901. TAIWAN  
TEL: 886-4-22447999  
FAX: 886-4-22444555, 22448555  
E-mail: b139@ms17.hinet.net, microweily@yahoo.com.tw  
http://www.microweily.com.tw